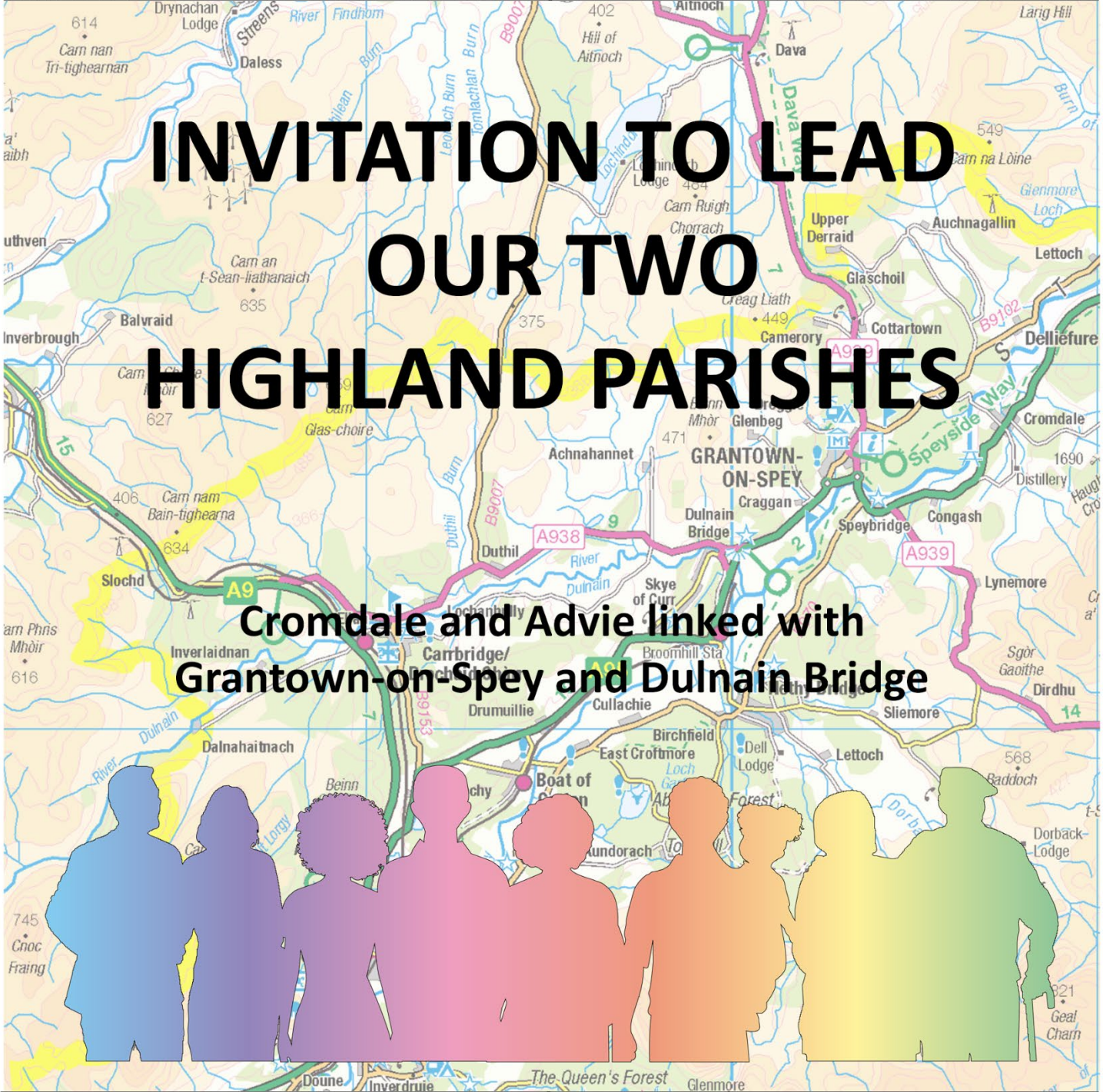




INVITATION TO LEAD OUR TWO HIGHLAND PARISHES

Cromdale and Advie linked with
Granttown-on-Spey and Dulnain Bridge



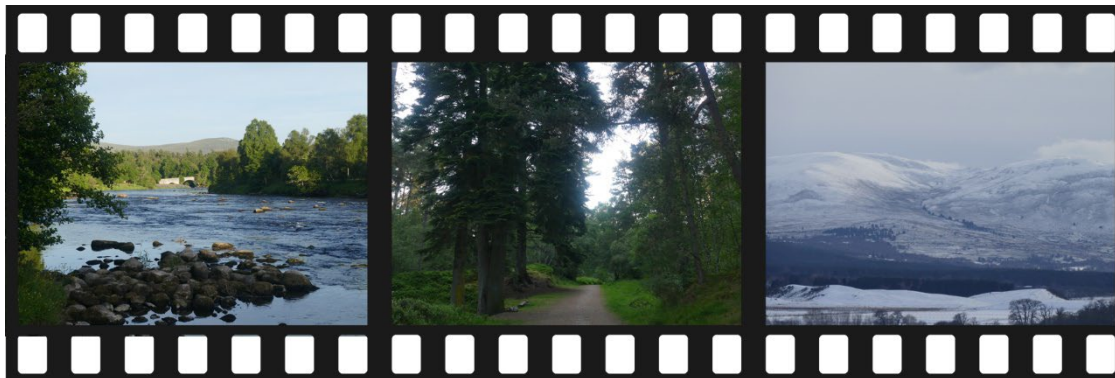
**Cromdale and Advie linked with
Grantown-on-Spey and Dulnain Bridge**

Contents

Invitation to lead our two Highland Parishes	3
Where we are	3
Who we are looking for	3
What we can offer	4
Background to the vacancy	4
About us and our Community	4
Parish Profile of Cromdale & Advie	6
History of the Charge/Congregation	6
Mission Statement	6
Outreach	7
Worship Life	8
Pastoral Care	9
Christian Education	9
Ecumenical Context	9
World Church	9
Stewardship and Finance	9
Volunteers	9
Parish Profile of Grantown-on-Spey and Dulnain Bridge	10
Church Life and Worship	10
Worship Services	11
Church Life	11
Community life and Outreach	12
Church Administration	13
Staffing	13
Finance	13
Church and Halls	13
Manse	14
Contacts	14

Invitation to Lead our Two Highland Parishes

WHERE WE ARE



Our two parishes are found on the edge of the spectacular Cairngorms National Park in Strathspey, renowned for its opportunities to enjoy the outdoors. Beside the Rivers Spey and Dulnain we are surrounded by beautiful scenery, mountains, valleys, rivers, forests, all with very varied wildlife, which give many opportunities to enjoy the outdoors. All of these things make the area very attractive to residents and visitors alike. Grantown-on-Spey is a planned town built from 1765 whilst the villages of Cromdale and Dulnain Bridge are older. The Cromdale and Advie Parish is linked with Grantown-on-Spey and Dulnain Bridge Parish, which were united in 2023.

WHO WE ARE LOOKING FOR

We are not looking for Superman or Wonderwoman but we would like a minister who:

Has a heart for God - Father, Son and Holy Spirit, and for prayer, Can be our spiritual leader and is able to share the vision of their ministry.

Will inspire us through creative worship, preaching and teaching, bringing the message of the gospel of Jesus Christ in a relevant way to contemporary life.

Is a people person who is approachable and can relate with people of all ages and backgrounds.

Is both a leader and a team player who will develop the working groups, identifying people's gifts and encouraging and empowering them.

Will nurture us in discipleship, to be outward looking and help us to share our faith in the wider community in a way that people are curious to know more, so that Jesus becomes relevant in their lives.

Is keen to be involved with schools and with children and their parents, and to work to develop the ecumenical relationships in the area.

Is committed to providing pastoral support for the congregation and community.

WHAT WE CAN OFFER

To work as a team with you, supporting you with our love and prayers.

Practical support including assistance with worship and pastoral care.

We will encourage a minimum of 1 day off per week

1 week per year for the minister's own spiritual growth and development in addition to statutory holidays.

BACKGROUND TO THE VACANCY

Our previous minister left us in 2021 to take up another position he was called to as a hospital chaplain.

ABOUT US AND OUR COMMUNITY

We are a welcoming and friendly community. Grantown-on-Spey is a town of around 2500 people, while the parish of Cromdale has approximately 630 and Dulnain Bridge has approximately 250. Grantown-on-Spey has a medical and dental surgery, two care homes, a supermarket, a good variety of independent shops, restaurants and take-aways and good transport links to Inverness and the rest of Badenoch and Strathspey. A community hospital is based in Aviemore 14 miles away.

Grantown-on-Spey provides Nursery, Primary and Secondary (Grammar School) education for the area. Pupils come to the Primary School (200 on roll) from Grantown-on-Spey, Dulnain Bridge, Cromdale and Advie, and in addition from Carrbridge, Nethy Bridge and Boat of Garten to the Grammar School (360 on roll).

The Craig MacLean Leisure Centre, used also by the adjacent Grammar School, provides a modern gym, exercise facilities and swimming pool. There is also a golf course, football team, bowling and tennis club, walking groups, just to mention a few of the many activities available. The whole area is a tourist hub with a large number of hotels, guest houses and holiday homes.

The main employment in the area is found in hospitality, farming, estate management, service industries, distilleries, tourist attractions, outdoor activities and artisans. Many people are able to work remotely from their homes.

Several large events are held each year in Grantown, including Grantown Agricultural Show, Triathlon, Thunder in the Glens (Harley-Davidson Motorcycle Rally), Grantown does

Christmas, Hogmanay street party, Greentown Show organised by Sustainable Strathspey, along with a monthly Farmers' Market.



The church building in Granttown-on-Spey, known as Inverallan Church, was built by the Countess of Seafield in memory of her husband who died in 1881 and also in memory of her son who died in 1884 and was opened in 1886 on the site of a previous church which was built in 1803. Dulnain Church was built for the United Free Church in 1904 but the building was closed in 2021. Cromdale Church was built in 1809. Inverallan and Dulnain Bridge were linked in 1976 with Cromdale and Advie added in 2013 having been previously linked to Nethy Bridge.

In 2023 the congregations of Inverallan and Dulnain Bridge united and became "Granttown-on-Spey and Dulnain Bridge Church". Both parishes in the charge have adopted the Unitary Constitution. The charge became part of the Presbytery of Clèir Eilean ì (the Church of Scotland in the Highlands and Hebrides) in January 2024.

Both Kirk sessions have agreed to accept a minister irrespective of sexual orientation. We have permission to call a minister on the basis of a 7 year reviewable tenure.

PARISH PROFILE OF CROMDALE AND ADVIE

Cromdale and Advie Church



History of the Charge/Congregation

Early records confirm that there has been a church in Cromdale since 600 AD. Cromdale Church is situated on the banks of the River Spey with the Cromdale hills in the background. The Church is known to date back to St Columba's follower Saint Moluag. The site/area is both peaceful and picturesque, with a community garden on the banks of the river for all to enjoy. The present church was built in 1809, with alterations taking place in 1893 and 2019.

We are a rural village charge.

The area has a mix of young families and older residents plus people who work in the surrounding area covering estate, distillery, and farming.

There is a new housing estate within a mile of the church, which is in the process of being built. The first stage is for 18 houses of which some are to be affordable homes, the second stage will see a further 18 homes and plans for a shop.

Mission Statement

We are a happy and committed congregation and see ourselves as a link in the chain of Christian worship and faith that has gone on in this place for centuries.

We strive to live out the Gospel and display God's love by serving the community where we are a valued element.

Our vision is to be a church which inspires the people of Cromdale and Advie and the surrounding area through worship and witness.

We are looking for an inspiring and enthusiastic minister who will support us in our linkage with Grantown-on-Spey and Dulnain Bridge, lead us on our journey of faith and promote outreach into the community.

As a Kirk Session we would be happy and willing to accept a Minister irrespective of sexual orientation.

We are strong, cohesive group, working together to promote the work of the church both in the building and the wider community. Our members have many skills and gifts, and they are happy to use these to further God's work here in our parish.

The congregation is united in its work to actively achieve the vision.

Outreach

- ❖ Outreach – in the absence of a church hall, the alterations in 2019 (complete new roof, removal of pews, creation of a disabled toilet and a tea preparation area) has provided a flexible space to enable community and church activities. The changes enabled the opportunity to extend Rhymetime and start Craft & Chat and Singalong.
- ❖ Rhymetime takes place in the church on a Wednesday morning, it is very successful and greatly valued by parents/carers of preschool children throughout the Strath. This group has been running for 9 years, to assist socialisation and interaction and provide a much need facility for the community.
- ❖ Craft & Chat group meet once a month in the church.
- ❖ Singalong was initiated to encourage singing for health and to be a resource for those living with dementia and their carers.
- ❖ The building is open every Wednesday afternoon from June to September and twice monthly for the rest of the year.
- ❖ The Community garden was created to encourage all to enjoy the tranquillity of the river bank setting. Since it has been developed it has been used not only by locals but also by canoeists, Speyside Way walkers, art groups and families enjoying family gatherings.



None of the above activities could take place without the enthusiasm and commitment of our church members.

Cromdale Church has a unitary constitution. The church session has 3 elders plus 3 valued co-opted members. One of our members is the Safeguarding Coordinator for the whole linkage.

Sub committees are:

- ❖ Pastoral care – Elders and other members inform the Minister of any needs in the communities. As we are a small community the church is quick to know if anyone is requiring support
- ❖ Finance – one of our elders oversees our finances, which are very healthy.
- ❖ Property – the property convenor carries out yearly inspections on the church and the glebes.
- ❖ Rhymetime - supports families from up and down the Strath, who come together to interact with song, verse and socialise.



- ❖ Garden – initiated by a very committed member of the church. Members of the church and volunteers from the community have worked together to create this popular space.
- ❖ Technology – we have embraced technology with 3 TV screens using PowerPoint presentations for services, Rhymetime, Singalong and special events.
- ❖ Community links – we strive to reach out to the community and support local events. We have a designated fund to assist school children from the parish with the cost of school trips and outings, we liaise with both the Primary and Secondary schools to facilitate this support. Members of our congregation are active in community organisations.

The last Elder to be ordained was in 2022

Worship Life

There is a weekly service at Cromdale church at 9:30, we have a joint monthly service with Grantown-on-Spey and Dulnain Bridge on a rotational basis.

Our worship style is relaxed with contemporary and formal elements, utilising modern technology.

Communion is held three times a year.

Our Roll – we have 51 members and 8 adherents.

Baptism – We have conducted 4 baptisms and 15 funerals over the last 5 years.

Special services are held to celebrate Easter, Harvest, Remembrance and Christmas and occasionally Songs of Praise. At present we have the valued support of two lay preachers and Interim Moderator who conduct services, the remaining services are conducted by the congregation.

We use data projection for all services, Rhymetime, Singalong and visiting speakers. We use CH4 and Mission Praise with digital hymnal accompaniment. We also have an excellent electric organ which is available for use. We have a fledgling Praise Band to enhance worship. We're looking to install Wi-Fi so that we can make full use of our licence to stream services.

Pastoral Care

Cards are distributed to the whole Parish at Easter and Christmas informing them of events and services. Members of the congregation are ready to be involved in pastoral care where there is a need either in the community or the Manse family.

Christian Education

We have no Sunday School at present, should children attend a service, activities are provided for them, and they are encouraged to join in the service.

Ecumenical Context

We share worship several times a year with our Scottish Episcopal Church in Grantown-on-Spey.

World Church

We support Christian Aid several times throughout the year and have various other charities who we support during the year.

Stewardship and Finance

The average surplus over the last 2 years was £4072. Giving to Grow requirement is £2668 for 2024.

Scottish Power has confirmed that we are a Green Energy User.

Volunteers

We are fortunate in having a supportive congregation who deal with everyday maintenance and running of the church and community garden.

PARISH PROFILE OF GRANTOWN-ON-SPEY AND DULNAIN BRIDGE

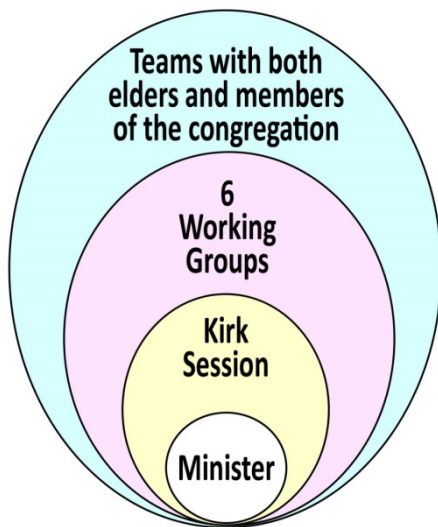
CHURCH LIFE and WORSHIP



In 2016 our Kirk Session established three aims for our Future Focus

- Modifying the church building
- Focus on Children, Young People & Families
- Engaging with the Wider Community

How our Unitary Constitution was structured in 2017/18:



Our Working Groups:



Our Kirk Session has 10 active serving elders. The most recent elders to be ordained were in 2019.

With the challenges we have faced in recent years such as the Covid-19 pandemic, building programme, vacancy since July 2021 we recognise that we need to review and re-invigorate our working groups.

Worship Services

Our congregation is elderly with 185 on roll and around 40 regularly attending Inverallan on Sunday, 14 at Cromdale and 8 at Dulnain Bridge. The worship is of a traditional style using organ or keyboard with CH4 and some other modern hymns.

There are the three places of worship in the charge and Sunday worship is organised as follows:

Cromdale Church 9.30am

Inverallan Church 10.30am

Dulnain Bridge Village Hall 11.30am.

During our vacancy, we have maintained regular Sunday worship in these venues, thanks to members and groups in the congregation being willing to take services. One elder has had presbytery training in leading worship and taking funerals and leads many of our services. We also have 3 retired ministers in the congregations who are willing to take the occasional service and lead communion 4 times a year. There is a rota for Bible readers, and some members of the congregation lead prayers when invited.

Our Interim Moderator takes a joint service on the last Sunday of the month. Joint services are also held with the Episcopal Church from time to time. We hold special services at Easter and Christmas (Christingle and Watchnight service), a Remembering Service in early December. An ecumenical Remembrance Sunday service is held in Inverallan church for Grantown, in conjunction with the British Legion, local RAF squadron and youth organisations, and further acts of remembrance at local war memorials. On Remembrance Day itself a very short service is held outside the British Legion building in Grantown Square.

Church Life

Although at present we have no children attending morning worship we do have a well-equipped children's area within the church where they can play but still be part of the service and not be separated from their parent/carer.

Messy Church is organised together with St Columba's Episcopal church on a monthly basis for 9 months each year. The programme includes craft, bible stories, singing, prayers and a meal. We would love to find ways to introduce more children and families to the bible and the good news about Jesus. We have had fluctuating connections with our local schools and we would like these to be re-established and developed.

A very active Prayer and Bible Study group meets weekly in one of the members' homes. The group joins together with St Columba's Episcopal church, the Speyside Christian Fellowship, and other Christians in Grantown for Advent and Lent Bible studies, and a monthly ecumenical prayer and bible study. This group also maintains a prayer tree in the church for anyone to make a request.

Pastoral Care, which has traditionally been linked to elders' districts, is at present carried out more informally by word of mouth and the "grapevine", together with several more structured methods of communication and support. Weekly updates and monthly posters detailing information about services, events and news are issued or delivered to members both "on line" and as paper copies for members without internet. Refreshments, served after Sunday morning worship provide a popular time of fellowship for members and visitors alike.

A Women's House Fellowship is held on a fortnightly basis where all ladies are welcome to attend for a time of fellowship.

Monthly worship services are held in our two care homes, both in Grantown on Spey. This is a joint effort, on a rota basis, with Inverallan, the Episcopal Church, the local Baptist Church, Churches of Scotland in Carrbridge and Nethy Bridge.

COMMUNITY LIFE AND OUTREACH

Our outreach to the local community and beyond is varied.

Christian Aid – As a congregation we support Christian Aid week and have collections at other times for Christian Aid and DEC (Disaster Emergency Committee) in response to emergency appeals.

Food Bank – The proceeds of our Harvest Service are donated to our local Food Bank and Food Hub and we respond to other requests for help with supplies when the need arises.

Community Café – The long standing Grantown weekly Community Café in the Community Centre was restarted after Covid restrictions were lifted. All five Grantown churches, have co-operated to form four teams, running it on a rota basis. It is becoming well used again by locals and visitors.

Re-engage: - This is a national organisation and our branch was initiated by Inverallan Kirk Session in 2012 involving all the local churches. Sunday afternoon tea is provided for those who live alone and is hosted monthly in the homes of different members of the community.

Grantown does Christmas – By taking a marquee stall at Grantown does Christmas our young people and families group is able to tell the real Christmas story and distribute Bible Society literature.

Christmas Tree Festival – Held in the Community Centre and the Episcopal Church Hall at the beginning of December. Messy Church contributes a Christmas tree and the Inverallan Prayer Group also contribute a tree with the messages of Christmas and opportunities for people to add prayers and names for remembrance. This has been well used.

Sustainable Strathspey – This is an active, imaginative, local environmental and conservation group which focuses on what we can do in small ways to reduce waste and live sustainably. This grew from a Peace and Justice group in Inverallan Church which highlighted issues of climate change and is now a community group.

Church opening – In the summer months the church building is opened daily for anyone to come and spend time to look, reflect and pray. Leaflets are available to take away and the prayer tree is well used for requests.

Church Christmas Tree and Star - Throughout Advent and until the end of January, we have an illuminated Star shining from the round window above our Church front door. There is also an illuminated Christmas tree in the grass area at the front of the Church. It is enjoyed by everyone.

Fundraising – We hold various events including coffee mornings and pop-up shops to raise money for our church redevelopment fund.

CHURCH ADMINISTRATION

Staffing

We have an organist and a cleaner. The grounds are maintained by a self-employed gardener. The work of the beadle is shared by volunteers.

Finance

Our financial income has increased year on year through covenanted donations and gift aid contributions.

CHURCH AND HALLS

Inverallan Church is the largest meeting space in Strathspey and in addition to church services is used for funerals, concerts and music festivals, school functions. The Kirk session has approved the use of the Church building for secular funerals.

Our hall is used on a regular basis by various community groups including Rainbows, Brownies, Badminton, Ballroom Dancing, Dance workshops, Keep Fit, Art Groups, Private Parties and Vaccination clinics.

Project “Inverallan 20/20” was set up in 2015. Plans have been drawn up to radically alter and refurbish the church building to meet modern standards and make the space more usable for

